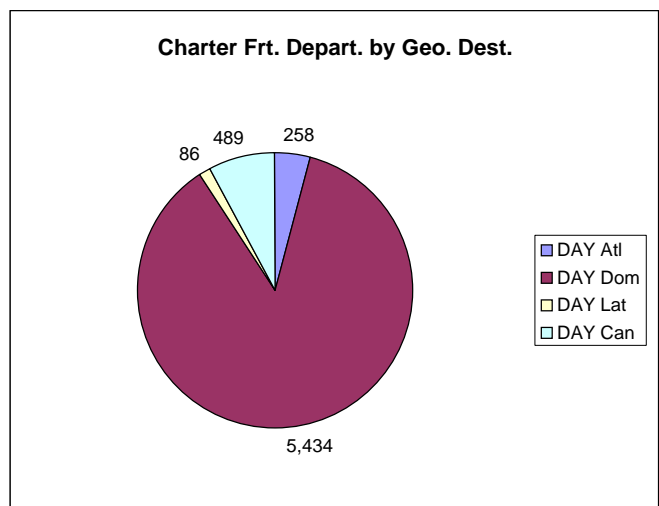
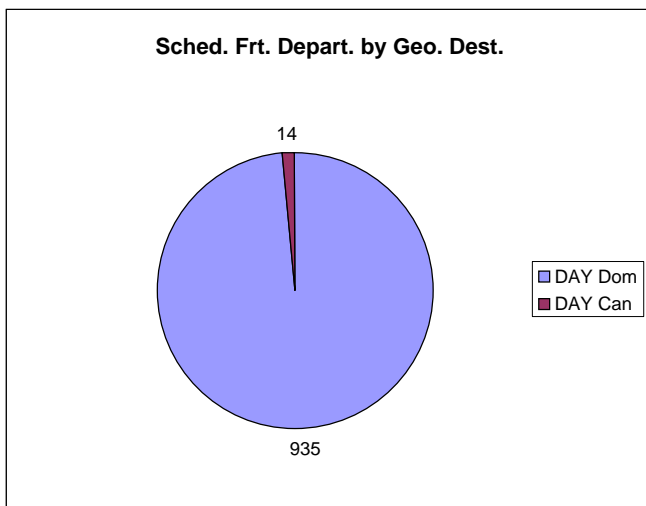
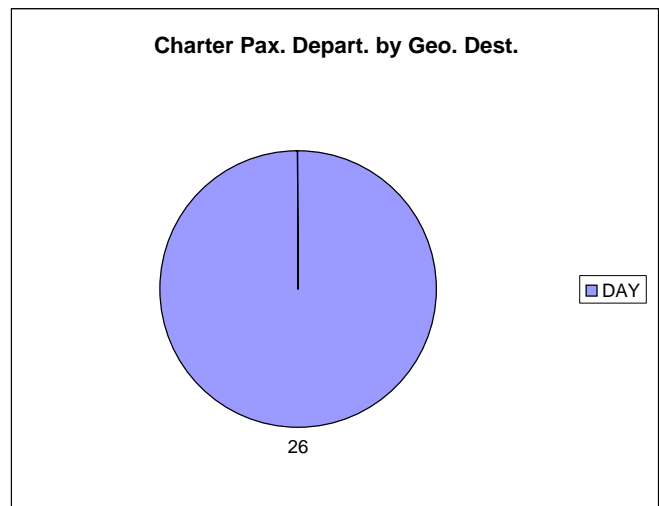
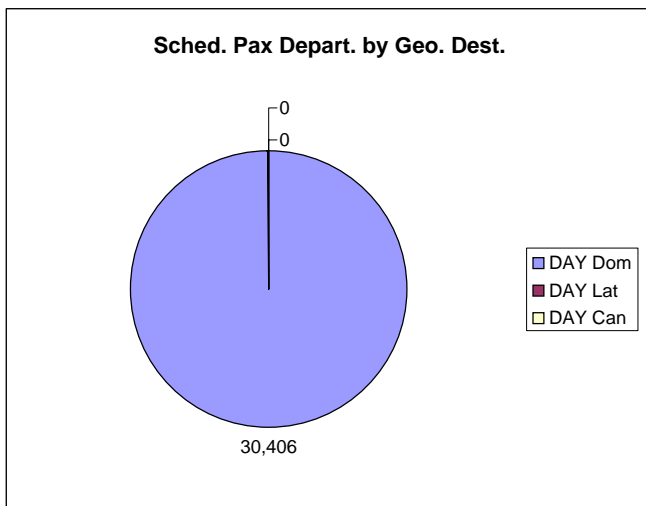
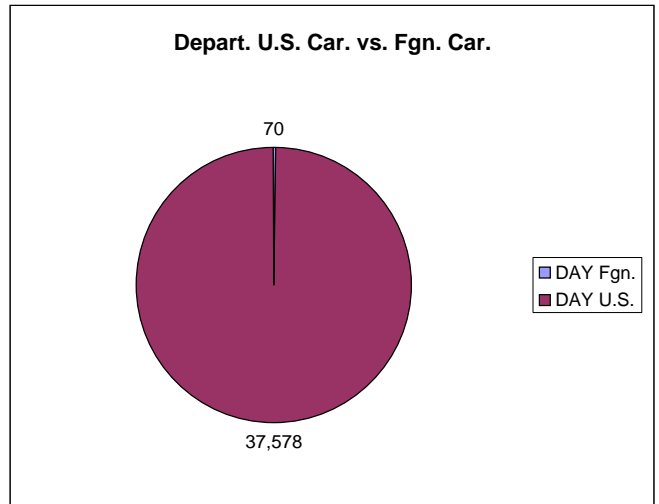
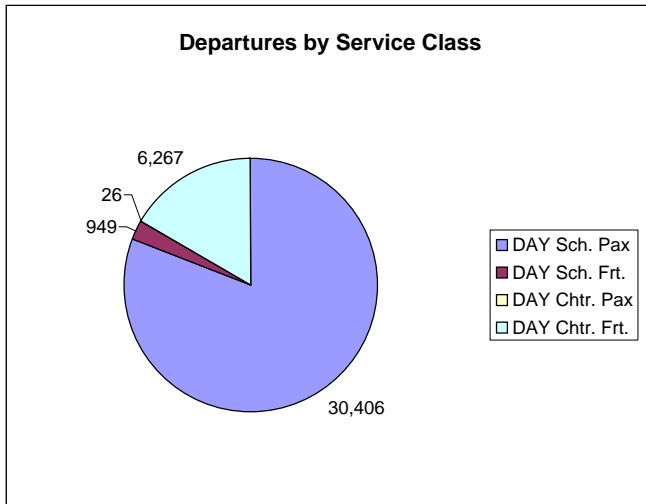
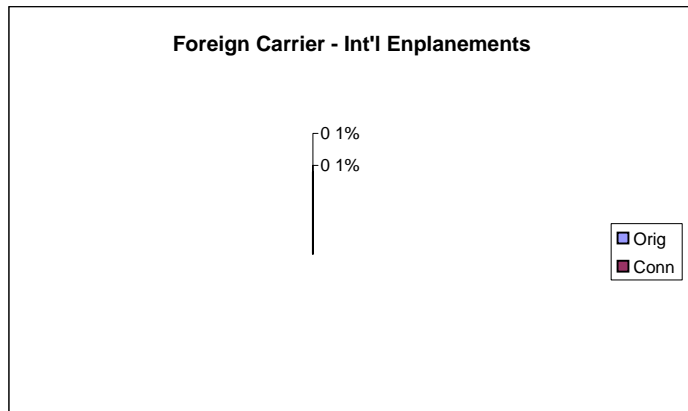
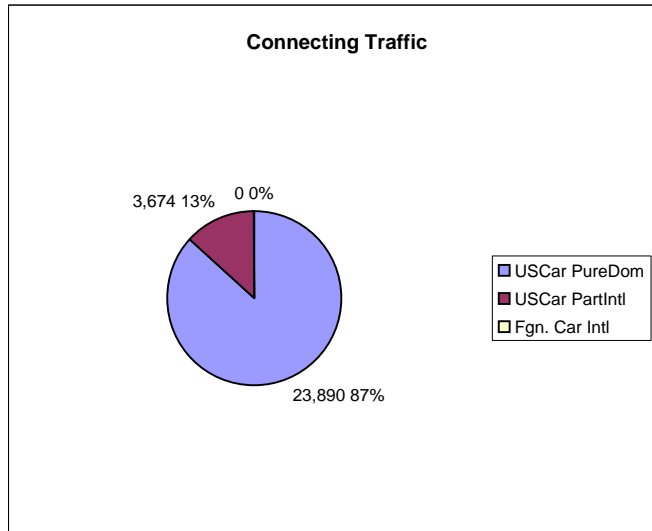
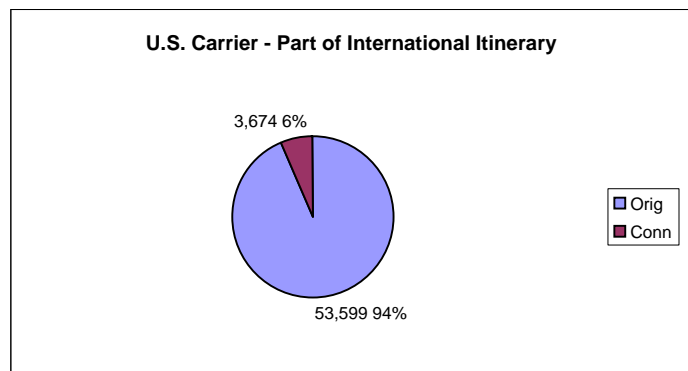
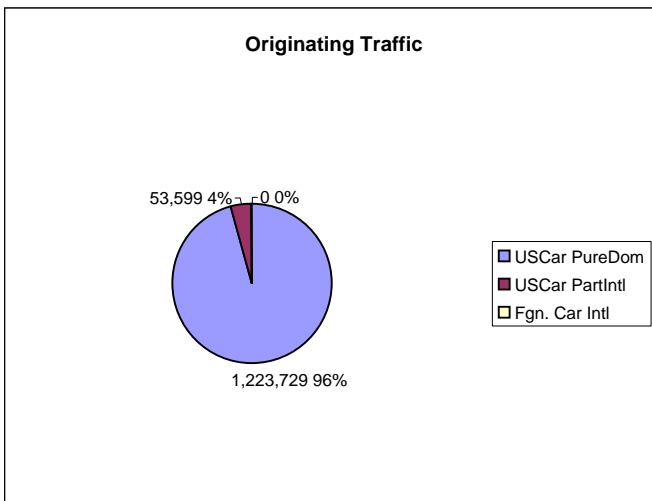
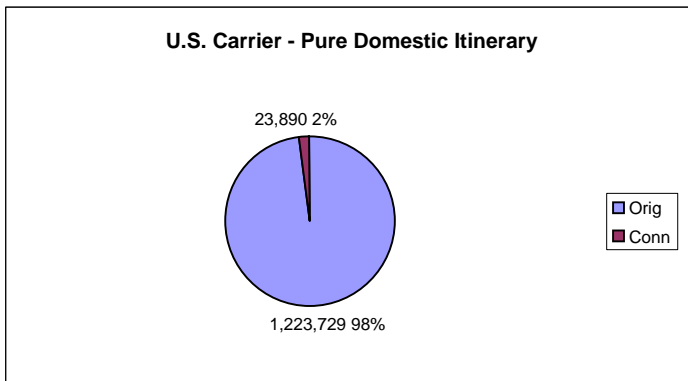
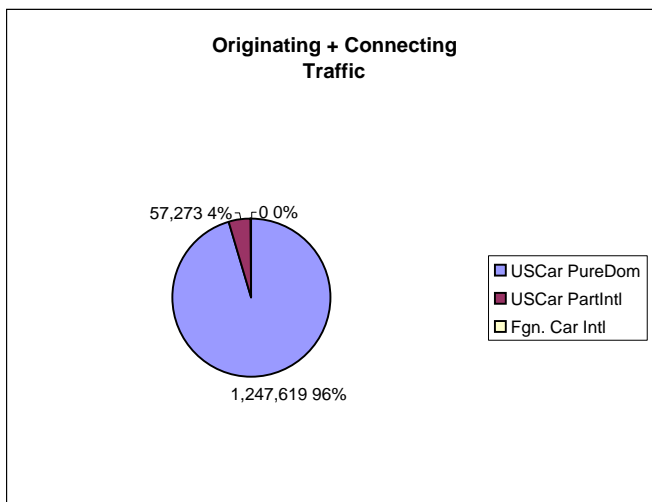
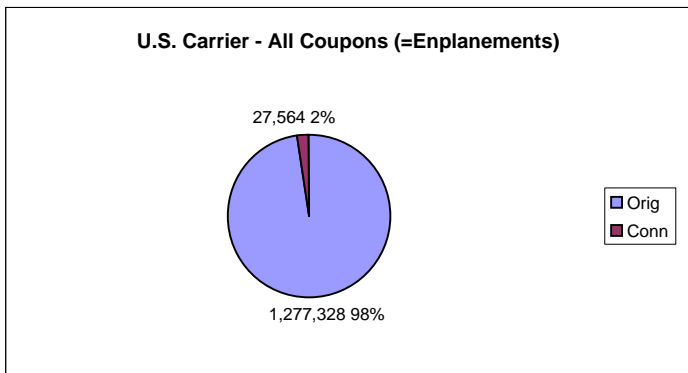


James Cox Dayton Intl  
Commercial Aircraft Departures - 2003

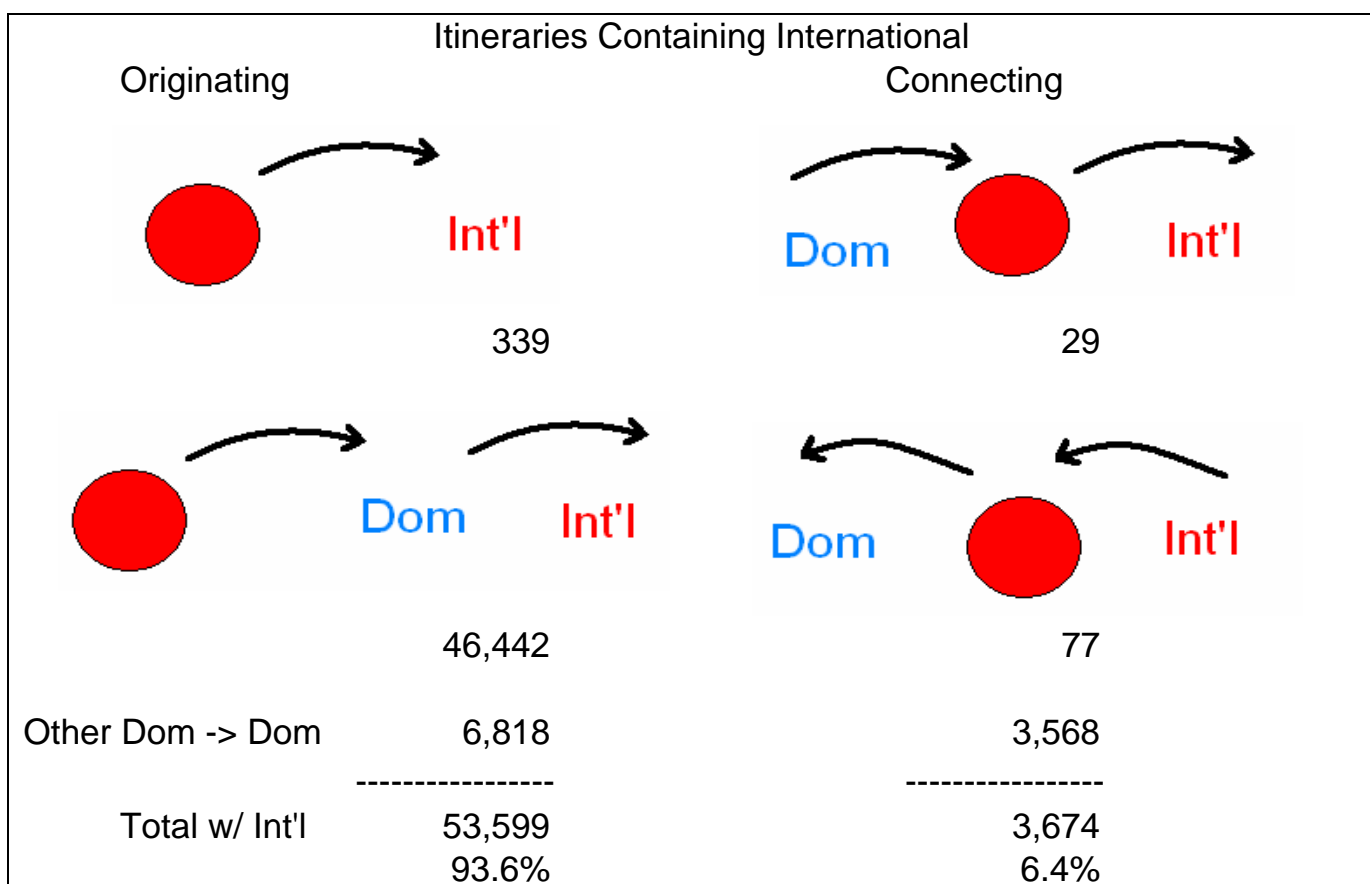
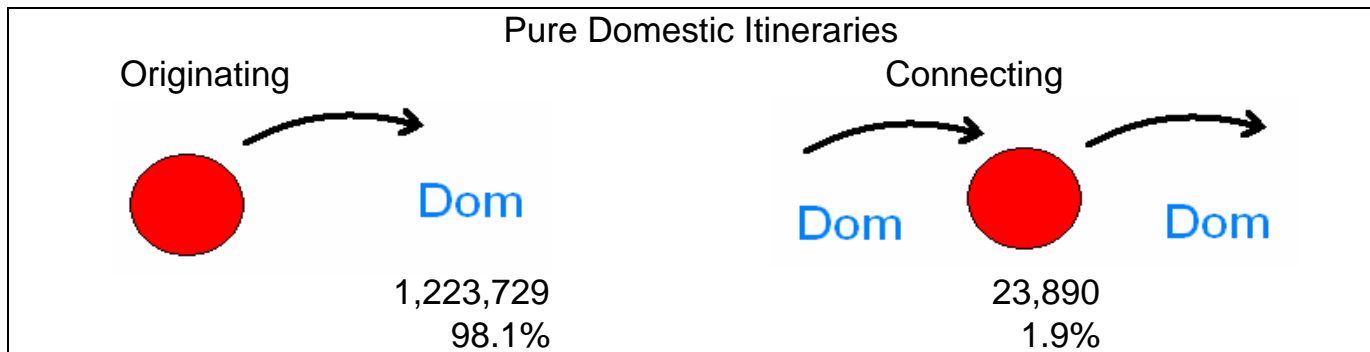


# James Cox Dayton Intl - DAY O&D Survey Coupon Passengers - 2003



Note: 10% survey times 10 - enhanced with estimated data for non-survey-reporting-carriers and normalized to "T100 Market" data

James Cox Dayton Intl - DAY  
 O&D Survey Coupon Passengers - 2003  
 (U.S. Carriers Only)



All Itineraries Combined		
Total	Originating	Connecting
	-----	-----
	1,277,328	27,564
	97.9%	2.1%
	Originating plus Connecting	
<b>Grand Total</b>	<b>1,304,892</b>	

Note: 10% survey times 10 - enhanced with estimated data for non-survey-reporting-carriers and normalized to "T100 Market" data



### Total Domestic Survey Coupons Summed by Operating Carrier with Correlation to T100 Data - Year 2003

(10% survey times 10 - enhanced with estimated data for non-survey-reporting-carriers ("XX" Marketing Carrier) and normalized to "T100 Market" data)

Enpl. Airport	All U.S. Airports	Operating Carrier	Marketing Carrier	Total Dom. Coupons	T100 Market Pass. Enpl.	T100 Segmt. Onboard Pass.	Aircraft Departures	Average Non-Stop Distance	Average Seats per Departure	Available Seat Miles (ASM's)	Revenue Pass. Miles (RPM's)	Load Factor	Revenue per ASM (cents/mile)	Survey Rev. per Cpn. Mile (cents/mile)
DAY	SUB	TZ		31	0	213	2	110	187.5	41,000	23,000	56.1	7.12	12.70
DAY		UA	UA	79,163										20.44
DAY		UA	US	1,764										15.12
DAY		UA	AC	635										30.64
DAY		UA	LH	175										17.04
DAY	SUB	UA		81,737	79,085	79,516	967	240	120.3	27,888,000	19,068,000	68.4	13.94	20.38
DAY		US	UA	9										16.43
DAY	SUB	US		9	0	181	1	477	182.0	87,000	86,000	98.9	16.25	16.43
DAY		XJ	NW	21,263										23.78
DAY		XJ	CO	819										18.30
DAY		XJ	KL	90										14.16
DAY	SUB	XJ		22,172	22,739	22,748	917	166	36.3	5,521,000	3,776,000	68.4	16.10	23.54
DAY		XP	XP	107										3.14
DAY	SUB	XP		107	108	108	1	1,658	122.0	202,000	179,000	88.6	2.78	3.14
DAY		YV	US	18,277										19.39
DAY		YV	XX	151										30.75
DAY		YV	UA	117										14.22
DAY	SUB	YV		18,545	16,864	16,874	482	313	50.0	7,557,000	5,437,000	71.9	14.01	19.49
DAY		YY	YY	72										22.36
DAY	SUB	YY		72										22.36
DAY		ZW	UA	36,945										16.96
DAY		ZW	FL	9,253										14.23
DAY		ZW	US	253										14.11
DAY	SUB	ZW		46,451	47,541	47,541	915	286	62.0	15,712,000	13,200,000	84.0	13.56	16.14
DAY		16	US	116,877										30.78
DAY		16	XX	3,268										34.94
DAY		16	UA	702										20.07
DAY	SUB	16		120,847	120,327	120,468	5,450	334	32.7	59,752,000	41,362,000	69.2	21.33	30.83
DAY		17	US	13,807										21.94
DAY		17	XX	1,565										37.46
DAY		17	UA	487										18.56
DAY	SUB	17		15,859	15,827	15,827	529	310	40.9	6,824,000	4,987,000	73.1	17.02	23.29
DAY		9E	NW	70,660										15.03
DAY		9E	XX	17,169										20.76
DAY		9E	CO	6,078										13.03
DAY		9E	KL	315										8.97
DAY		9E	DL	28										18.20
DAY	SUB	9E		94,250	94,308	94,427	2,573	323	47.3	39,659,000	31,320,000	79.0	13.02	16.48
DAY		9N	AA	53,596										20.61
DAY		9N	9N	1,929										11.08
DAY	SUB	9N		55,525	55,636	55,636	1,537	337	49.8	25,807,000	18,777,000	72.8	14.76	20.28

### Total Domestic Survey Coupons Summed by Operating Carrier with Correlation to T100 Data - Year 2003

(10% survey times 10 - enhanced with estimated data for non-survey-reporting-carriers ("XX" Marketing Carrier) and normalized to "T100 Market" data)

Enpl. Airport	All U.S. Airports	Operating Carrier	Marketing Carrier	Total Dom. Coupons	T100 Market Pass. Enpl.	T100 Segmt. Onboard Pass.	Aircraft Departures	Average Non-Stop Distance	Average Seats per Departure	Available Seat Miles (ASM's)	Revenue Pass. Miles (RPM's)	Load Factor	Revenue per ASM (cents/mile)	Survey Rev. per Cpn. Mile (cents/mile)
DAY	TOT			1,304,524	1,304,721	1,310,210	30,391	334	57.6	651,465,000	490,123,000	75.2	13.68	18.19



**Top 50 Coupon Markets From Enplanement Airport  
O&D Survey Domestic Passenger Coupon Data - Year 2003**

(10% survey times 10 - enhanced with estimated data for non-survey-reporting-carriers ("XX" Marketing Carrier) and normalized to "T100 Market" data)

Enpl. Airport	Depl. Airport	Operating Carrier	Marketing Carrier	Pure Dom. Orig. Coupons	Pure Dom. Conn. Coupons	Dom. Part Int'l Tkt.	Origin Pass. Coupon Rev.	Connect Pass. Coupon Rev.	Dom. Part Int'l Tkt. Rev.	Dist.	Orig. Yield Cents / Mile	Conn. Yield Cents / Mile	DPIT Yield Cents / Mile	Total Dom. Coupons	Total Dom. Revenue	Total Dom. Cents / Mile
DAY	ATL	DL	DL	289,125	4,178	9,369	20,478,956	321,784	591,698	432	16.40	17.83	14.62	302,672	21,392,437	16.36
DAY	ATL	FL	FL	103,551	327	882	6,648,315	22,614	58,555	432	14.86	16.01	15.37	104,760	6,729,483	14.87
DAY	ORD	UA	UA	70,629	2,250	4,979	3,494,157	114,539	227,319	240	20.61	21.21	19.02	77,858	3,836,015	20.53
DAY	CVG	OH	DL	57,513	2,343	1,519	685,514	30,248	29,866	64	18.62	20.17	30.72	61,375	745,628	18.98
DAY	STL	9N	AA	52,555	540	501	3,665,894	45,095	22,873	338	20.64	24.71	13.51	53,596	3,733,862	20.61
DAY	ORD	MQ	AA	46,706	1,101	4,695	2,201,283	56,332	155,756	240	19.64	21.32	13.82	52,502	2,413,371	19.15
DAY	MDW	C8	TZ	50,644	656	326	2,084,371	20,809	10,233	226	18.21	14.04	13.89	51,626	2,115,413	18.13
DAY	DFW	AA	AA	45,376	408	2,482	5,163,579	66,187	295,152	861	13.22	18.84	13.81	48,266	5,524,918	13.30
DAY	DTW	9E	NW	41,507	757	5,950	1,166,480	27,821	153,381	166	16.93	22.14	15.53	48,214	1,347,682	16.84
DAY	PIT		16 US	40,632	475	677	2,442,120	21,463	42,250	215	27.96	21.02	29.03	41,784	2,505,834	27.89
DAY	ORD	ZW	UA	32,669	889	3,174	1,383,615	33,131	90,102	240	17.65	15.53	11.83	36,732	1,506,847	17.09
DAY	CVG	DH	DL	28,695	1,338	741	384,159	18,002	16,480	64	20.92	21.02	34.75	30,774	418,641	21.26
DAY	CLE	RU	CO	27,916	931	1,113	1,196,844	26,645	80,979	162	26.47	17.67	44.91	29,960	1,304,468	26.88
DAY	DCA		16 US	28,024	214	108	4,959,960	22,555	6,743	391	45.27	26.96	15.97	28,346	4,989,257	45.02
DAY	PHL		16 US	22,611	492	1,958	3,045,241	47,140	104,103	477	28.24	20.09	11.15	25,061	3,196,483	26.74
DAY	LGA	RP	US	22,460	137	243	2,752,110	31,430	16,097	549	22.32	41.79	12.07	22,840	2,799,637	22.33
DAY	EWV	RU	CO	20,850	386	1,439	3,191,896	46,088	97,935	533	28.72	22.40	12.77	22,675	3,335,920	27.60
DAY	MSP	9E	NW	19,754	433	2,137	1,537,908	48,575	187,661	574	13.56	19.54	15.30	22,324	1,774,144	13.85
DAY	DTW	XJ	NW	18,741	416	2,096	765,151	15,651	57,159	166	24.60	22.67	16.43	21,253	874,161	23.75
DAY	IAH	RU	CO	18,142	936	1,855	2,046,859	119,247	293,593	929	12.15	13.71	17.04	20,933	2,459,700	12.65
DAY	CLT		16 US	18,563	186	1,264	1,458,987	20,562	64,288	370	21.24	29.88	13.75	20,013	1,543,837	20.85
DAY	DFW	MQ	AA	18,609	215	810	2,345,024	32,216	99,090	861	14.64	17.40	14.21	19,634	2,476,330	14.65
DAY	MCO	FL	FL	19,535	10		1,694,945	685		808	10.74	8.47		19,545	1,695,630	10.74
DAY	ORD	DH	UA	13,284	351	880	469,692	11,355	24,283	240	14.73	13.48	11.50	14,515	505,329	14.51
DAY	MSP	9E	XX	14,302			1,556,201			574	18.96			14,302	1,556,201	18.96
DAY	IAD	DH	XX	12,881			1,507,528			368	31.80			12,881	1,507,528	31.80
DAY	CLT	YV	US	10,872	285	871	744,197	17,716	43,033	370	18.50	16.80	13.35	12,028	804,947	18.09
DAY	ATL	ZW	FL	9,222	10	21	567,678	1,103	147	432	14.25	25.53	1.62	9,253	568,928	14.23
DAY	CLT		17 US	8,456	67	609	654,344	4,931	31,073	370	20.91	19.89	13.79	9,132	690,348	20.43
DAY	IAD	DH	UA	4,869	1,074	2,531	271,119	77,548	107,756	368	15.13	19.62	11.57	8,474	456,424	14.64
DAY	ATL	OH	DL	5,973	57	552	424,728	2,626	30,619	432	16.46	10.67	12.84	6,582	457,973	16.11
DAY	PIT	YV	US	5,667	310	212	290,588	10,769	15,783	215	23.85	16.16	34.63	6,189	317,139	23.83
DAY	MKE	AL	YX	5,073	9	19	573,586	3,774	2,903	284	39.81	147.64	53.81	5,101	580,263	40.05
DAY	PIT		17 US	4,114	27	534	251,643	2,637	18,822	215	28.45	45.43	16.39	4,675	273,101	27.17
DAY	DTW	9E	CO	3,963	266	150	115,875	7,646	9,413	166	17.61	17.32	37.80	4,379	132,933	18.29
DAY	DTW	9E	XX	2,780			243,723			166	52.81			2,780	243,723	52.81
DAY	CLE	RU	NW	2,162	101	63	85,027	5,380	8,924	162	24.28	32.88	87.44	2,326	99,331	26.36
DAY	STL	9N	9N	1,831	77	21	66,884	3,823	1,530	338	10.81	14.69	21.55	1,929	72,236	11.08
DAY	ORD	UA	US	885	822	47	36,193	24,377	2,269	240	17.04	12.36	20.11	1,754	62,839	14.93
DAY	MSP	9E	CO	1,367	190	142	64,334	15,461	9,076	574	8.20	14.18	11.14	1,699	88,871	9.11
DAY	PIT		16 XX	1,541			154,732			215	46.70			1,541	154,732	46.70
DAY	LGA		16 US	1,529		8	148,960		523	549	17.75		11.91	1,537	149,483	17.72
DAY	STL	RP	AA	1,387	48		108,574	5,147		338	23.16	31.72		1,435	113,721	23.45
DAY	IAH	RU	NW	1,172	47	39	105,508	7,856	10,602	929	9.69	17.99	29.26	1,258	123,966	10.61
DAY	DTW	NW	NW	1,076		81	43,302		2,926	166	24.24		21.76	1,157	46,227	24.07
DAY	ORD	DH	XX	1,118			117,681			240	43.86			1,118	117,681	43.86
DAY	DCA		16 XX	979			114,905			391	30.02			979	114,905	30.02
DAY	CVG	DH	XX	959			41,880			64	68.23			959	41,880	68.23
DAY	PIT		17 XX	828			83,139			215	46.70			828	83,139	46.70
DAY	DTW	XJ	CO	675	114	30	18,988	2,757	3,141	166	16.95	14.57	63.08	819	24,886	18.30
DAY	OTH			9,957	417	1,777	1,031,111	26,663	99,606	525	19.73	12.18	10.68	12,151	1,157,381	18.14
DAY	TOT			1,223,729	23,890	56,905	84,685,486	1,420,388	3,123,741	376	18.41	15.81	14.60	1,304,524	89,229,615	18.19
				Pure Domestic Orig+Connect			1,247,619									
				Percent Originating - Pure Dom.			98.09%									
				Percent Connecting - Pure Dom.				1.91%								
				Percent of Total Domestic			93.81%	1.83%	4.36%							